



# UNDERFLOOR HEATING

PRODUCT GUIDE 2024



# CONTENTS

<b>Leading the Way in Underfloor Heating</b> .....	<b>03</b>
<b>Benefit of Underfloor Heating</b> .....	<b>04</b>
<b>C.A.D Service</b> .....	<b>05</b>
<b>Delivery Services and Warranties</b> .....	<b>06</b>
<b>Types of Floor Coverings</b> .....	<b>07</b>
<b>Screed Floor Construction</b> .....	<b>08</b>
<b>Suspended Flooring</b> .....	<b>09-11</b>
<b>Floating Floor Construction</b> .....	<b>12-13</b>
<b>Manifolds</b> .....	<b>14-15</b>
<b>Manifold Options</b> .....	<b>16-18</b>
<b>Electric Underfloor Heating</b> .....	<b>19</b>
<b>Hetta Underfloor Pipe</b> .....	<b>20</b>
<b>Multi Layer Pipe</b> .....	<b>21</b>
<b>Complete UFH Packs</b> .....	<b>22</b>
<b>Thermostats and Controls</b> .....	<b>23-26</b>
<b>Pipe Connectors</b> .....	<b>27</b>
<b>Accessories and Tools</b> .....	<b>28-30</b>

# LEADING THE WAY IN UNDERFLOOR HEATING

## HETTA SPECIALISES IN STATE-OF-THE-ART UNDERFLOOR HEATING (UFH) FOR ALL FLOOR CONSTRUCTION TYPES AND FINISHES

Underfloor heating will provide you with consistent room temperatures – as well as improved air quality, more usable room space, total temperature control and energy savings of up to 30% compared to traditional heating systems.

### UNDERFLOOR HEATING CAD DESIGN SERVICE

- The design team at Hetta are at hand to assist with all aspects of your underfloor heating requirements
- Utilising the latest software, we can accurately design and specify the correct underfloor heating solution for your chosen project. This includes heat loss calculations, flow rate settings, pipe layout diagrams and manifold positioning
- Fully indemnified and conforming to BS EN 12831 & BS EN1264

### TECHNICAL SUPPORT AND CUSTOMER SERVICE

- All products from the Hetta range are backed by a comprehensive technical advisory service, available to provide advice and guidance on all aspects of application, design and installation

### WHAT IS UNDERFLOOR HEATING?

Underfloor heating is a way of heating a home through strong and flexible tubing that is embedded in the floor. It is efficient and affordable, offering numerous advantages over radiators.

There are various types of underfloor heating systems available. The best underfloor heating solution for you will depend on a range of factors including your project type, your current heating system and energy source.

- Suitable for most properties
- Energy-efficient
- Maximizes space in the home
- Luxurious feeling of warm floors
- Flexible control through zoning areas of the home

# BENEFITS OF UNDERFLOOR HEATING

## HEATING EFFICIENCY

- Hetta underfloor heating is much more energy efficient than traditional central heating systems
- Operating at much lower temperatures, underfloor heating provides a constant, even desired heat to the designated areas, as and when required
- State of the art heating controls allows multi programmable settings whilst remaining completely user friendly

## RADIANT HEAT

- Hetta underfloor heating disperses heat evenly across the floor area, eliminating cold spots and draft areas
- Much of the heat produced by traditional central heating systems is lost, whilst underfloor heating provides an extremely comfortable living environment as the heat produced warms from the base upwards

## DESIGN FREEDOM

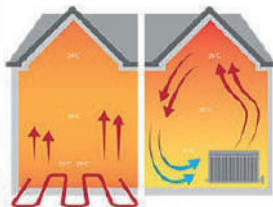
- No more unsightly wall hung radiators, means you can place your furniture where you want
- Hetta underfloor heating is completely invisible and is near to silent during operation

## SUITABLE FOR EVERY PROJECT TYPE

- Hetta offers a diverse product range allowing for underfloor heating to be installed during new build or refurbishment
- Whether it is a full house project or a single room application, regardless of floor construction material, Hetta offers a solution
- You can easily integrate our underfloor heating systems with any existing heat source including renewable sources

## MAINTENANCE FREE

- Hetta underfloor heating is produced to the highest specification, providing our customers with a lifetime of comfort
- Other than thermostat control there is virtually zero maintenance required with underfloor heating
- Once fitted, you can relax and enjoy the benefits. Hetta underfloor heating pipe comes with a 50 year manufacturer's warranty



*Hetta underfloor heating system*

*Traditional central heating system*

# UNDERFLOOR HEATING DESIGN ASSIST AND C.A.D. SERVICE

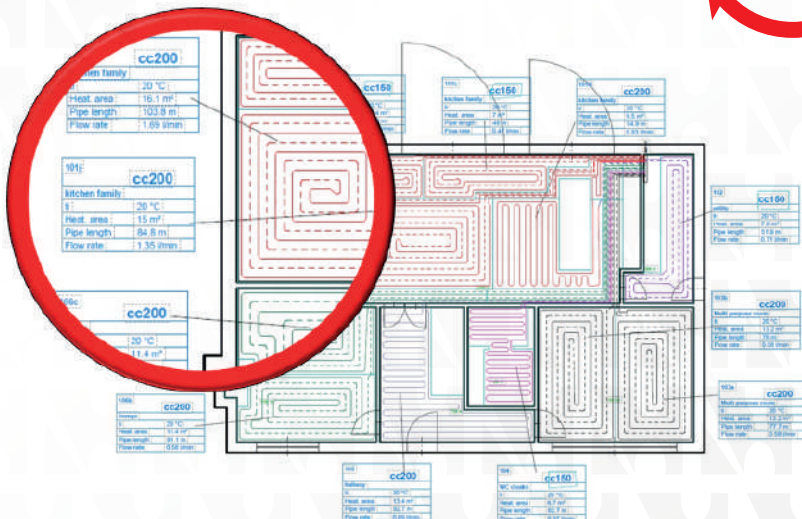
Hetta systems offer a full design and CAD service which includes Underfloor heating designs according to BS EN 1264. Professional CAD drawings will also be supplied with every system detailing all circuit information & manifold positions.

Renewable energy systems integration Underfloor heating systems are perfectly suited to work with a renewable energy heat source such as a Heat Pump or a Solar Thermal system. Our in-house design team can expertly specify & design a perfect system according to your bespoke requirements.

Using the latest in design simulation software, we can provide our customers with detailed system drawings & energy yields of the proposed renewable energy system which will integrate with your Underfloor heating system.

The Technical knowledge and experience of our fully trained Underfloor heating technical engineers are available at all stages of the project, offering expert advice and guidance to the highest standards such as:

- Comprehensive designs
- Circuit lengths with correct flow rates and pressure losses
- Detailed Drawings of floor plan layouts and circuits
- Dedicated Underfloor heating technical team



# DELIVERY SERVICES AND WARRANTIES

All Underfloor Heating components at Hetta Systems are stock items and are available for National UK next day delivery on all orders placed before 3.30pm.

Our couriers will deliver between 8am - 6pm on day of delivery

\*Next day delivery excludes Scottish Highlands, Ireland, Channel Islands & Isle of Man.



50 Year Warranty on Pipe

3 Year Warranty on Manifolds

2 Year Warranty on Thermostats and Controls

Lifetime Warranty on Electric UFH Mats and Cables

# TYPES OF FLOOR COVERINGS

*Most floor coverings are suitable for use with underfloor heating systems, below is a general overview of each floor covering.*



Tile and stone

## **TILE AND STONE FLOOR**

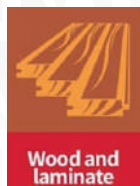
Most ceramic and stone based floor coverings offer the least resistance to heat transfer which makes these coverings the ideal partner for underfloor heating. When fitting these products, it is advisable to use a flexible adhesive to allow for expansion and contraction to restrict the possibility of the finished floor from cracking or coming loose.



Vinyl

## **VINYL FLOOR**

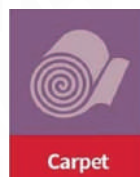
Vinyl flooring offers a low heat resistance, and most vinyl and plastic flooring can be used with underfloor heating



Wood and laminate

## **WOODEN FLOORS**

Timber floors work well with underfloor heating. You will find that most underfloor heating should not exceed 27°C when wood flooring is laid. Care must be taken to ensure that the timber moisture content does not exceed 10% when the floor is laid, to prevent movement in the floor as the timber dries out.



Carpet

## **CARPETS**

Carpet and underlay provides the highest heat resistance. You should make sure the underlay is suitable for the use with underfloor heating and has a low TOG value, the combined carpet and underlay should not exceed 1.5 TOG.

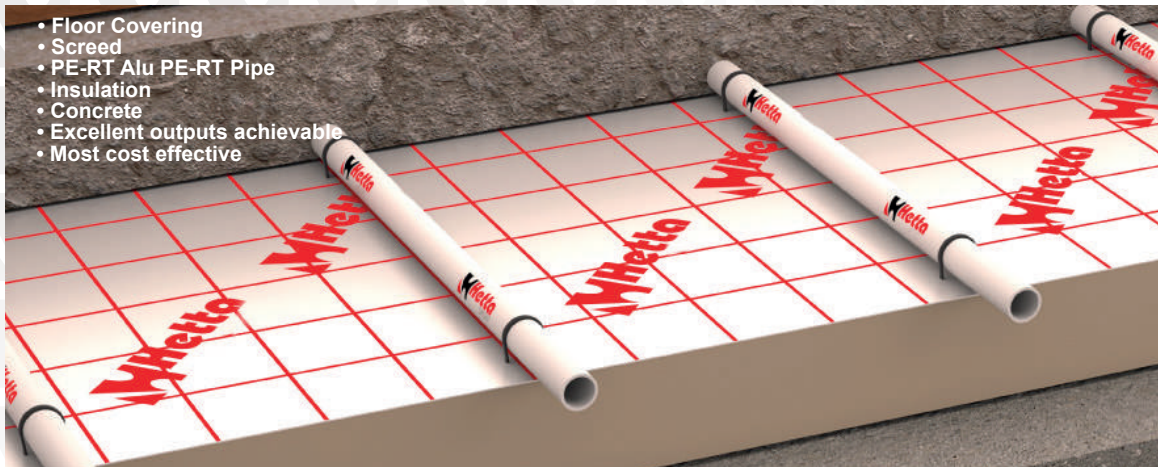


# SCREED FLOOR CONSTRUCTION

For screeded floors the underfloor heating system is laid onto an insulation layer before the screed is poured, neatly containing all of the pipe work within the floor structure.

This system has the added advantage of maintaining the floor structure depth exactly the same as it would be without the heating system.

- Floor Covering
- Screed
- PE-RT Alu PE-RT Pipe
- Insulation
- Concrete
- Excellent outputs achievable
- Most cost effective



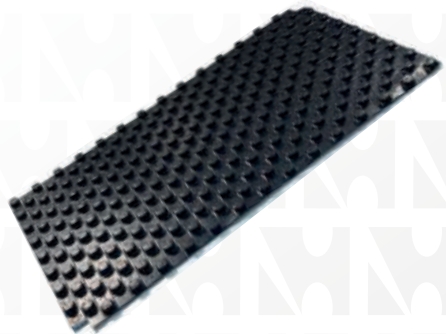
HSWSP01 – Wet Screed Panel 20mm

HSWSP02 – Wet Screed Panel 16mm

Made from 100% recycled high impact plastic. 100mm centres ensure accurate pipe spacing and even heat distribution. Each panel overlaps to form one continuous grid, reducing installation time.

**Available in:** 20mm for 16mm Pipe  
16mm for 12mm Pipe

\*Patten allows for 100mm, 150mm, 200mm pipe centres



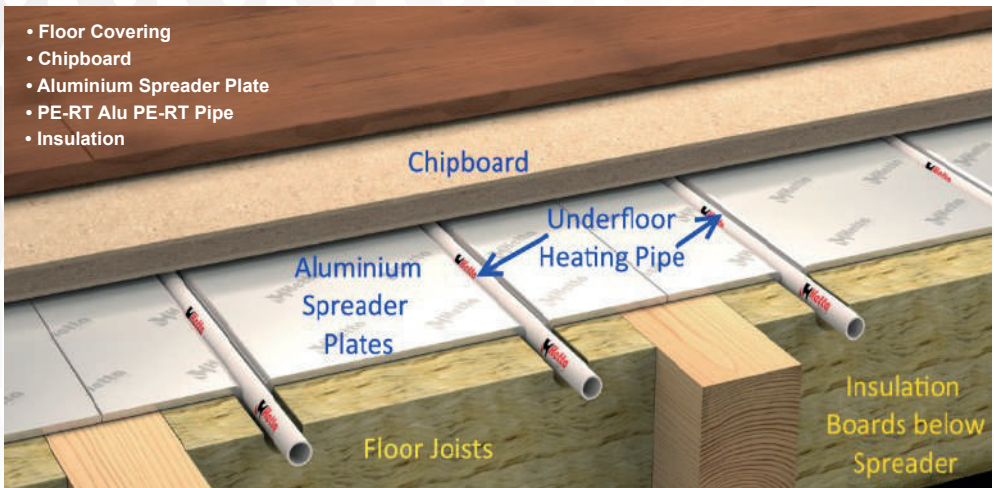


# SUSPENDED FLOOR CONSTRUCTION

Suspended floor systems include joisted floors as well as solid floors with battens fixed to the floor.

Hetta aluminium spreader plates are ideal for underfloor heating applications on suspended floor constructions.

The floor void must be insulated with either loose fill insulation or mineral wool insulation, and it is advised to minimise airflow to reduce the possibility of heat loss. For irregular joist widths cut the plates to fit.

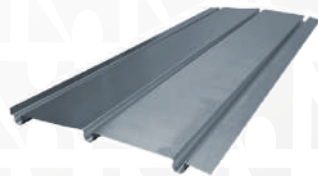


- Easy installation system
- Lightweight with excellent thermal conduction
- Suitable for standard joist sizes of 400mm

**HSATP02 – Aluminium Double Plate**

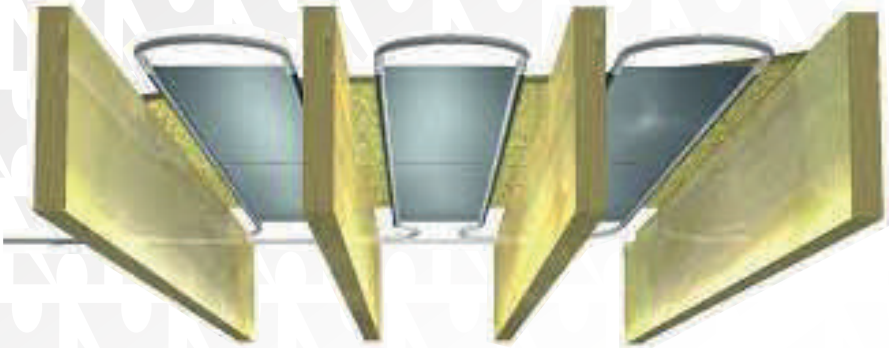


**HSATP03 – Aluminium Triple Plate**



# SUSPENDED FLOOR CONSTRUCTION

## *Fit From Below High Output Aluminum Heat Diffuser Plates*



The easy install option to fit your between joist underfloor heating without lifting the floor – Specifically designed to be fitted from below to the underside of the floor, to hold pipes and spread the heat in a joisted floor installation. This 150mm wide plate allows 2 plates to be installed alongside each other within a standard 350mm wide joist cavity (or 3 plates within a 550mm wide joist cavity), therefore making it the ideal choice for Heat Pump Installations and high heat loss areas (Close 150 mm pipe spacing means increased heat output)

Simply screw the plates to the underside of the floor.

**FFB150 – Fit from Below  
Spreader Plate 150mm Wide**



**FFB250 – Fit from Below  
Spreader Plate 250mm Wide**



# SUSPENDED FLOOR CONSTRUCTION

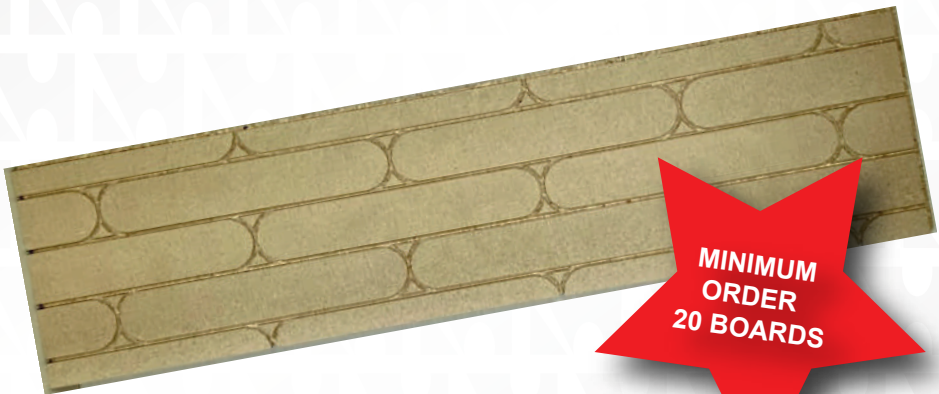
## HSGCP - Chipboard Panel

22mm Grooved Chipboard Underfloor Heating Boards – 2400mm x 600mm x 22mm  
Require 12mm Pipe with maximum circuit length 80 metres

- 1.44m<sup>2</sup> 2400 x 1200 x 22mm
- Routed out including radius return in the board 150mm centres
- 1 x 80 metre circuit covers 12m<sup>2</sup> .
- Feed pipes to the manifold typically run underneath
- A 6-9mm Ply Separating Layer must be bonded to the Chip Board before fitting finished floors
- Tongue and groove for faster installation

Our Chip-UFH Board is highly conductive which allows for an even spread of heat throughout the floor.

System should be completed with suitable plywood before laying final floor finish



## INSTALLATION

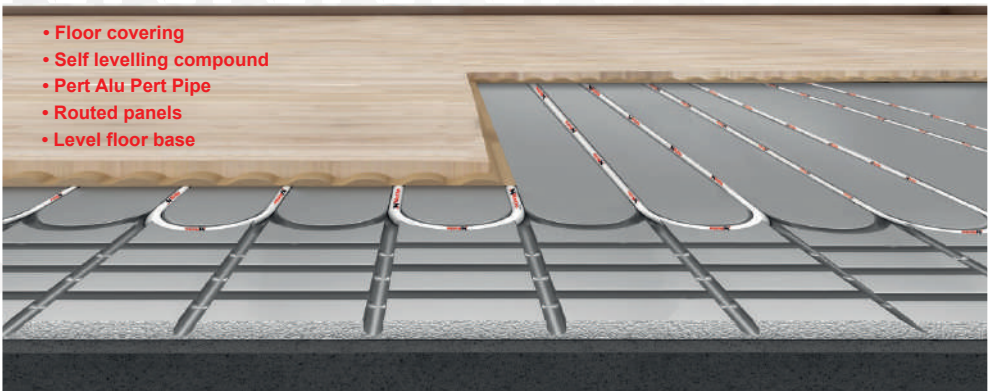
Routed Chip Board is typically installed directly onto floor joists with suitable screws and joint adhesive, minimizing floor build up.  
(Joists usually insulated in-between with high density PIR),

# FLOATING FLOOR CONSTRUCTION

The Hetta floating floor system has been uniquely developed to meet an increasing demand from clients requiring underfloor heating as a retro fit solution to existing floor areas.

The extruded polystyrene panels are foil coated and have a low thermal mass and consequently have a swift response time to changes in temperature.

The grooves in the insulation securely retain the underfloor heating pipe-work in the correct position eliminating the need for supplementary fixings.



- No need for screed, only raises floor by 20mm, no waiting for screed to dry, greatly reduced fitting costs
- Available with pipe spacing at 150mm if greater heat output is required
- Lightweight & easy to cut
- Lay directly on existing floor
- Panels include radius return for complete and easy install
- EPS400 – Can be tiled directly onto

## HSEPS400-16 - Insulation EPS Panel HSEPS400-20 - Insulation EPS Panel

EPS low profile insulation panel  
1200 x 600 with 150mm centers in both  
20mm & 16mm depths

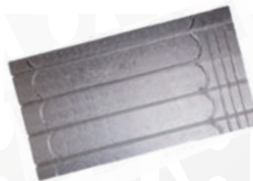
Available for  
16mm & 12mm  
pipe



## HSEPS400FOILED – Foiled Insulation Panel

Foiled EPS low profile insulation panel  
1200 x 600 x 20 mm with 150mm centers

Available for  
16mm only



# FLOATING FLOOR CONSTRUCTION

## HETTA PROTHERM OVERLAY PANEL

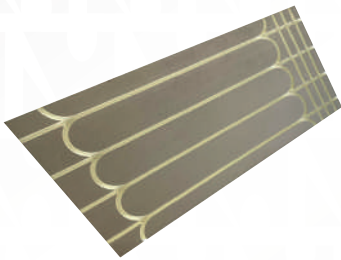
The Hetta Protherm overlay panel is a lightweight construction board designed for use with tiles, cement-based screeds and synthetic renders. It is manufactured from high density extruded polystyrene with a reinforced cement coating on the top and bottom surfaces providing excellent impact and compressive strength. The Protherm panel can be cut using conventional tools and has good bonding properties for direct application of cement-based tile adhesives.

The boards are Ideal for use in wet areas such as bathrooms and where there is exposure to moisture, for soft floor finishes, it is essential to cover the panel with a minimum of 10mm thick flexible, cement-based levelling screed. For wood paneling and wood laminate, the panel should be covered with a minimum of 7mm thick flexible, cement-based levelling screed.

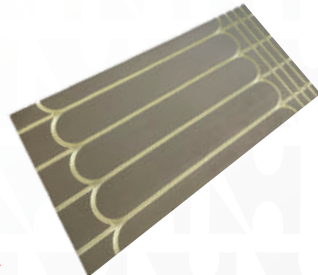
Note: Solvent based products must not be used. Also, the panels are not suitable for laying directly onto joists and must have a supporting floor surface such as plywood, floor grade chipboard or similar

**Note: Use with our approved adhesive spray HSFD170 on page 29**

### HSPROTHERM-16MM (12MM PIPE)



### HSPROTHERM-20MM (16MM PIPE)



#### TECHNICAL DATA

Total overall dimensions	1200mm x 600 mm x 16mm /20mm
Pipe Diameter	12mm OR 16mm
Thermal conductivity	0.033 W/mk
Pipe centres	150mm
Material	Cement Reinforced Surface XPS
Water Absorption	0.6%
Compression Strength	400 Kpa
Temperature Range	-50 deg to 75 deg Centigrade
Fire performance	BS 476 / EN13501-1 Class 0 / Euroclass E
Sound Reduction	BS EN ISO 10140-3 19dB ( 6mm )
Weight	2.48 kgs



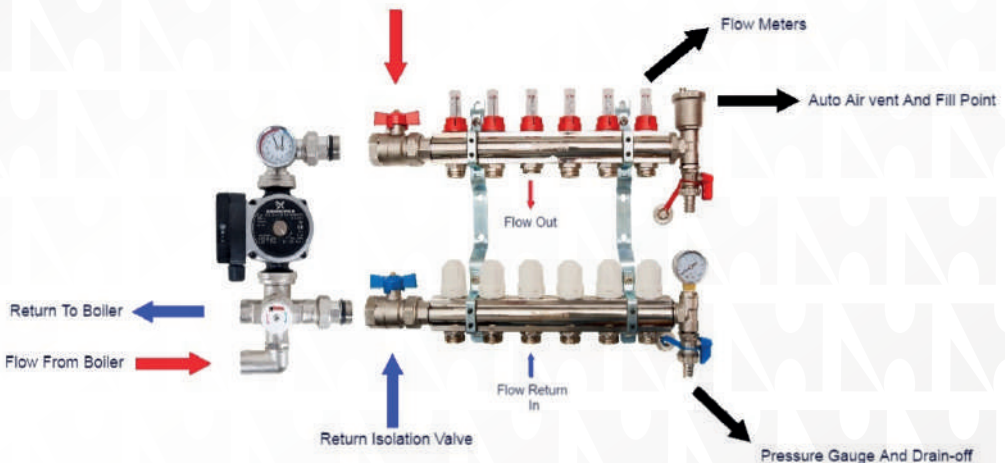
# MANIFOLDS

The Hetta Systems underfloor heating manifolds are part pre-assembled and “ready for installation” with all the necessary components to aid a swift installation. The manifold distributes the primary warm heating water from your boiler, heat pump, buffer tank or thermal store evenly into each underfloor heating circuit, if there is a demand for heat within that relevant zone.

Our manifolds are available from 2-12 ports and are manufactured from Nickel Plated Extruded Brass which are ready assembled with Flow Meters, isolation Valves, Fill and Drain points and Actuator pins for immediate wall mounting.

Supplied pre mounted on installation brackets, Valves on the return manifold accept a thermoelectric type head for remote control of each zone. Quick reaction to supply temperature changes.

*Note: Euro cone pipe connectors 16mm and blanking caps are ordered and supplied separately*

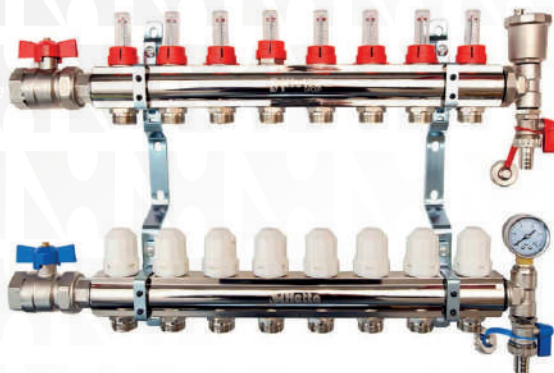




# MANIFOLDS

## MANIFOLDS (PRE-ASSEMBLED)

- Hetta nickel plated pre-assembled distribution manifold
- Comes complete with isolating ball valves, adjustable flow meters, fill and drain points and automatic air vents
- Accepts manifold control pump pack



Code	Manifold Ports	Width W/O Pump	Width with Pump
HSMAN02	2 port Manifold	233 mm	388 mm
HSMAN03	3 port Manifold	283 mm	438 mm
HSMAN04	4 port Manifold	333 mm	488 mm
HSMAN05	5 port Manifold	383 mm	538 mm
HSMAN06	6 port Manifold	433 mm	588 mm
HSMAN07	7 port Manifold	483 mm	638 mm
HSMAN08	8 port Manifold	533 mm	688 mm
HSMAN09	9 port Manifold	583 mm	738 mm
HSMAN10	10 port Manifold	633 mm	788 mm
HSMAN11	11 port Manifold	683 mm	838 mm
HSMAN12	12 port Manifold	733 mm	888 mm

# MANIFOLD OPTIONS

## HSMZCP01 - MANIFOLD CONTROL PACK

- Provides controlled mixed temperature water to underfloor heating systems with a heat output up to 14kW
- Lightweight and compact in order to connect directly onto a standard manifold without the need for extra brackets or support
- The control pack consists of; mixing valve, A≤0.2EEI High Efficiency6 Grundfos Pump
- Used in conjunction with 2-12 port manifolds
- Compact bolt on unit providing quick and simple installation
- Easy set up within the adjustable range of 35°C to 65°C
- Controls flow temperature to +/- 2°C even with changing boiler flow and return temperatures
- Manufactured to BS EN 1264-4



*"This product is fully reversible to suit Left and Right side manifold positions"*

# MANIFOLD OPTIONS

## HSBV01 – HETTA BLENDING VALVE

### FEATURES

The mixing valve lets you set the flow temperature between 35 and 65°C for precise control to the overall temperature through the underfloor heating and can be fed by any type of heat source including oil and gas boilers, wood burning stoves and green energy sources such as solar, ground and air source heat pumps.



## HSMEP01 – MANIFOLD ELBOW PACK (INCLUDING PUMP)

### FEATURES

- 'A' rated pump (Grundfos)
- In-built 4-way deflector plate
- Integrated check valves for easy filling
- Temperature gauge
- Assembled in the UK: pre-tested, packaged and ready for instant installation
- 2 Year warranty
- Fully reversible (Left or Right sided manifold)
- Side or bottom entry connections



# MANIFOLD OPTIONS

## HSSZCP01 – SINGLE ZONE CONTROL PACK

- Provides controlled mixed temperature water to underfloor heating systems with a heat output up to 3kW
- Pre-assembled on fixing plate
- The control pack consists of; mixing valve, ≤0.2EEI High Efficiency Grundfos Pump

### **SPECIFICATION:**

- Easy set up within the adjustable range of 35°C to 65°C
- Controls flow temperature to +/- 2°C even with changing boiler flow and return temperatures
- Manufactured to BS EN 1264-4



## HSEANC02 – HETTA ELECTROTHERMIC ACTUATOR

- Hetta 230 volt actuator 2 wire, 3/4 " thread to manifold, normally closed



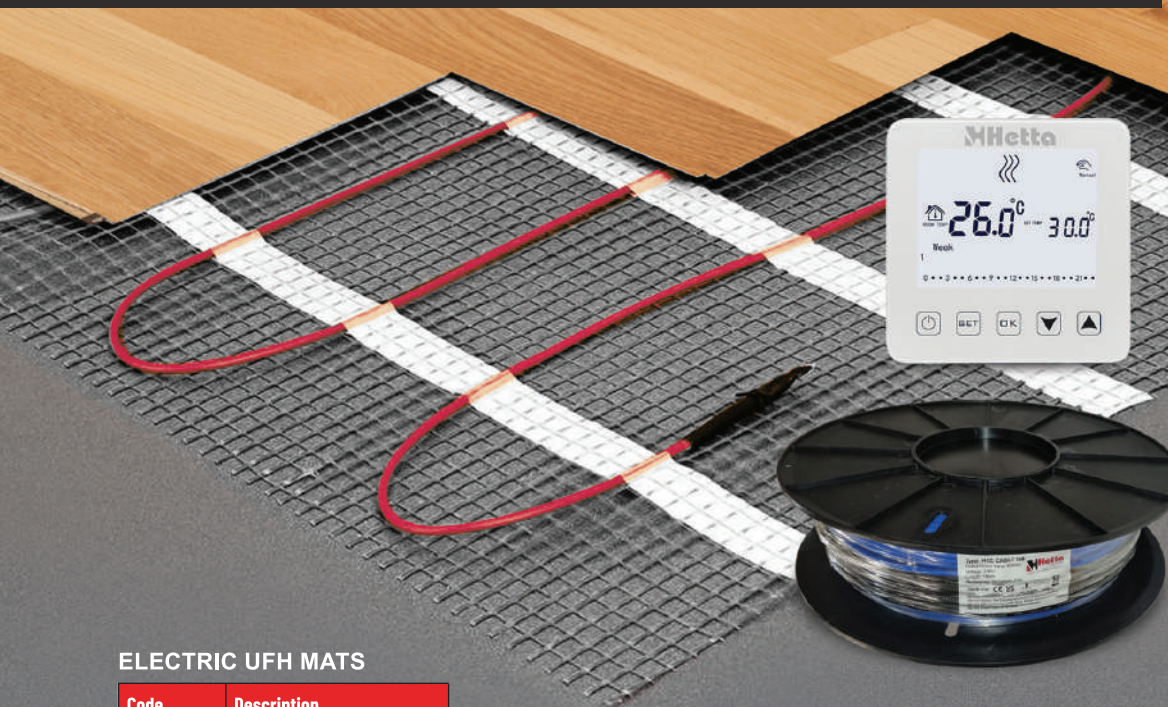
## HSZV01 – HETTA ZONE VALVE

- The motorized zone valve has been designed to control the flow of water in iron and copper pipe systems. Although specifically designed for small bore central heating systems, the valve can be used in commercial and industrial applications.





# ELECTRIC UNDERFLOOR HEATING



## ELECTRIC UFH MATS

Code	Description
HSE-MAT1	(1m2) - Electric Heating Mat
HSE-MAT1.5	(1.5m2) - Electric Heating Mat
HSE-MAT2	(2m2) - Electric Heating Mat
HSE-MAT2.5	(2.5m2) - Electric Heating Mat
HSE-MAT3	(3m2) - Electric Heating Mat
HSE-MAT4	(4m2) - Electric Heating Mat
HSE-MAT5	(5m2) - Electric Heating Mat
HSE-MAT6	(6m2) - Electric Heating Mat
HSE-MAT7	(7m2) - Electric Heating Mat
HSE-MAT8	(8m2) - Electric Heating Mat
HSE-MAT9	(9m2) - Electric Heating Mat
HSE-MAT10	(10m2) - Electric Heating Mat
HSE-MAT12	(12m2) - Electric Heating Mat

## THERMOSTAT

Code	Description
HSE-HWSTAT	Hard Wired Electric Stat
HSE-WIFISTAT	WIFI Electric Stat

## ELECTRIC UFH CABLE DRUMS

Code	Description
HSE-CABLE10	PVC Twin Conductor Cable (10m)
HSE-CABLE20	PVC Twin Conductor Cable (20m)
HSE-CABLE30	PVC Twin Conductor Cable (30m)
HSE-CABLE40	PVC Twin Conductor Cable (40m)
HSE-CABLE50	PVC Twin Conductor Cable (50m)
HSE-CABLE60	PVC Twin Conductor Cable (60m)
HSE-CABLE80	PVC Twin Conductor Cable (80m)
HSE-CABLE100	PVC Twin Conductor Cable (100m)
HSE-CABLE120	PVC Twin Conductor Cable (120m)
HSE-CABLE140	PVC Twin Conductor Cable (140m)
HSE-CABLE160	PVC Twin Conductor Cable (160m)

## ACCESSORIES

Code	Description
HSE-BB6MM	Backer Board 1200 x 600 x 6mm
HSE-ACCESSORYKIT	Roller + Tape + Primer

# HETTA UNDERFLOOR HEATING PIPE

Hetta multi-layer underfloor heating pipe, made from a 5 layer composite material using PE-RT (Polyethylene of Raised Temperature resistance) as the inner and outer layers coupled with a thick aluminium core with butt welded construction. Maximum operating pressure 10bar; maximum operating temperature 95oC. Highly energy efficient due to the aluminium inner core technology. Easy to install and holds it's shape once positioned.

## SPECIFICATION:

- 16mm x 2.0mm
- 16mm available in 50m, 100m, 150m, 200m, 500m coils
- 12mm available in 80m, 160m
- Metre increments
- Lightweight
- Flexible

### PE-RT Alu PE-RT Pipe 16mm

<b>HSPAP50</b>	50m Coil
<b>HSPAP100</b>	100m Coil
<b>HSPAP150</b>	150m Coil
<b>HSPAP200</b>	200m Coil
<b>HSPAP500</b>	500m Coil

### PE-RT Alu PE-RT Pipe 12mm

<b>HSPAP80</b>	80m Coil
<b>HSPAP160</b>	160m Coil





# MULTI LAYER PIPE

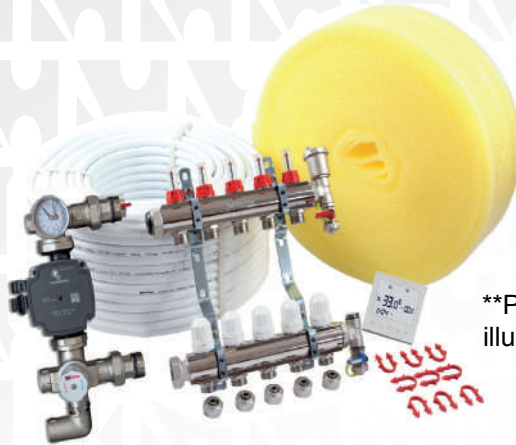
## TECHNICAL DATA BUTT-WELDED MULTI LAYER PIPE



### Pipe dimension

Outer diameter, normal size in mm	12mm/16mm
Wall thickness, normal size in mm	2
Inner diameter, normal size in mm	12
Pipe weight in g/m	109
Pipe weight with water in g/m	231
Internal volume in l/m	0.113
Heat conductivity in W/m - K	0,4
Expansion coefficient in mm/m - k	0,025
Surface roughness (inner pipe) in um	0,4
Oxygen diffusion in mg/l-d	0
Max operating pressure, class 2 in bar	10
Max operating pressure, class 4 in bar	6
Max operating pressure, class 5 in bar	6
Max operating temperature, class 2 in °C	70
Max operating temperature, class 4 in °C	70
Max operating temperature, class 5 in °C	95
Malfunction temperature in °C	100
Bend radius, freely bent	z5xD
Bend radius with bending tool	z4xD

# COMPLETE UFH PACKS



\*\*Picture is for illustration purpose only

The Hetta complete underfloor heating single zone pack contains everything required to install an underfloor heating solution to your chosen floor area. These packs are only suitable for floor areas where one zone (thermostat) control is required.

Complete UFH packs have sufficient pipe supply for the specified floor area, based upon 200mm pipe centres, assuming the manifold is centrally located.

Manifolds are pre-assembled and include isolating ball valves, adjustable flow meters, fill and drain points, automatic air vents and pipe connectors for 16mm pipe.

## Complete Underfloor Heating Packs

**HSKIT20** - 20m<sup>2</sup> UFH Room Pack  
(Includes 2-way Manifold)

**HSKIT30** - 30m<sup>2</sup> UFH Room Pack  
(Includes 2-way Manifold)

**HSKIT40** - 40m<sup>2</sup> UFH Room Pack  
(Includes 2-way Manifold)

**HSKIT50** - 50m<sup>2</sup> UFH Room Pack  
(Includes 3-way Manifold)

**HSKIT60** - 60m<sup>2</sup> UFH Room Pack  
(Includes 3-way Manifold)

### EACH PACK INCLUDES THE FOLLOWING:

- Hetta PE-RT Alu PE-RT pipe
- Manifold control pack (Grundfos A rated pump)
- Ported manifold & pipe connectors
- Edge insulation
- Pipe staples
- Programmable room thermostat
- Installation guide
- Flexible

# HETTA THERMOSTATS & CONTROLS

Hetta Systems offers a range of stylish room temperature controls enabling you to heat your home efficiently. No matter what kind of thermostat you are looking for, you are sure to find exactly what in you need in our extensive product range.

You will be able to control your home's temperature with ease thanks to our thermostats. There is one to suit every property, from manual control models to programmable thermostats. We're also pleased to stock innovative products such as Wi-Fi and smartphone-controlled thermostats, bringing this essential piece of heating control equipment in line with all the other technology that makes everyday life that little bit easier.



# HETTA THERMOSTATS & CONTROLS

## HM01PT – HETTA PROGRAMMABLE THERMOSTAT

### FEATURES

- 'Backlit display
- 6 Period Programmable Temperature Control
- Internal External sensor
- Precise Temperature Display
- Built in Memory Function
- 230v



## HM01TS – HETTA PROGRAMMABLE TOUCHSCREEN THERMOSTAT

### FEATURES

- Backlit display
- 6 Period Programmable Temperature Control
- Internal External sensor
- Precise Temperature Display
- Built in Memory Function
- Touchscreen
- 230v



## HM01RF – HETTA PROGRAMMABLE WIRELESS THERMOSTAT

### FEATURES

- Backlit display
- 6 Period Programmable Temperature Control
- Precise Temperature Display
- Built in Memory Function Wireless
- Compact design
- Ideal for multi zone control
- Batteries included



# HETTA THERMOSTATS & CONTROLS

## HS01RF – HETTA WIRELESS PROGRAMMABLE THEROSTAT KIT

### FEATURES

- Backlit display
- 6 Period Programmable Temperature Control
- Precise Temperature Display
- Built in Memory Function
- Wireless
- Compact design
- Batteries included



## HWC018 & HWC018RF – HETTA 8 ZONE WIRED WIRING / WIRELESS CENTRE

### FEATURES

- Easy Installation
- Easy to Operate
- Multi Zone Control
- Wired/Wireless
- Indicator LEDs
- Compact Design
- 230v



## SENSORPROBE - HETTA SENSOR PROBE

### FEATURES

- This sensor can be used to measure air and floor temperature. This probe is supplied with a 3-meter cable which can be extended to 20 meters if required.



# HETTA THERMOSTATS & CONTROLS



## HS99WPT – HETTA WIFI THERMOSTAT

### FEATURES

- Programmable thermostat with large LCD display
- 5 day, 5 + 1 day & 5 + 2 day timer options. 6 available time periods per day.
- Displays room temperature and setting temperature.
- Including built in sensor and option for external NTC probe
- Switched 230-volt output for control of wiring centres, boilers, and pumps.
- WIFI connectivity (No Hub Required)
- 2 Year Manufacturer's Guarantee



## HS01WPT – HETTA WIFI THERMOSTAT

### FEATURES

- Programmable thermostat with backlit LCD display
- 5 day, 5 + 1 day & 5 + 2 day timer options. 6 available time periods per day.
- Displays room temperature and setting temperature.
- Including built in sensor and option for external NTC probe
- Switched 230-volt output for control of wiring centres, boilers, and pumps.
- WIFI connectivity (No Hub Required)
- 2 year manufacturers guarantee



## HS01WRF – HETTA WIFI THERMOSTAT AND RECEIVER KIT

### FEATURES

- Programmable thermostat with backlit LCD display
- 5 day, 5 + 1 day & 5 + 2 day timer options. 6 available time periods per day.
- For use with single zone installations.
- Receiver included
- Switched 230-volt output for control of wiring centres, boilers, and pumps.
- WIFI connectivity (No Hub Required)
- 2 year manufacturers guarantee



26



# PIPE CONNECTORS

## COMPRESSION FITTINGS 16MM & 12MM



**HSMC16**  
Manifold  
Adaptor



**HSBE01**  
3/4 " Manifold  
Blanking Plug



**HSSC16**  
16mm Comp  
Coupling



**HSEC16**  
16mm Comp  
Elbow



**HSECM16**  
16mm - 1/2 "  
Connector



**HSEC1615**  
16mm - 15mm  
Copper Reducer



**HSMC12**  
Manifold  
Adaptor



**HSSC12**  
12mm Comp  
Coupling



**HSEC12**  
12mm Comp  
Elbow

## PRESS FITTINGS



**HSPS16**  
16mm - 16mm



**HSPS1612**  
16mm -  
1/2" Male



**HSPE1612**  
16mm - 1/2"  
Male Elbow



**HSPE16**  
Elbow  
16mm - 16mm

# ACCESSORIES AND TOOLS

## HSPD01 – PIPE DECOILER

High Strength Underfloor Pipe De-coiler for easy un-wrapping and laying of underfloor heating pipes. Specifically designed to improve fitting efficiency and comfort, as well as dramatically speeding up installation. De-coiler holds all of our pipe coils from 50 meter to 500-meter coils.



## HSPCIN01 – HETTA TACKER GUN

Provides a quick and easy method of fixing pipe staples to secure underfloor heating pipe into an insulated surface. It replaces the requirement for manual fitting and provides improved working comfort



## HAPS90 - PIPE SUPPORT BEND

A vital accessory used to protect and support pipe between the manifold and where it enters the floor. Allows heating pipes to be bent 90-degrees without forming any kinks that may impede flow within the pipe. Accepts 15mm to 20mm pipe



## HSPRT16 – PIPE REAMING TOOL

The pipe re-rounding tool is designed for use after cutting the pipework. This tool will ensure that the cut end is perfectly spherical and ensure that the connection (whether it to be coupling or a euro cone connector) will be fit perfectly as planned. This tool is best for 10, 12 and 16 pipe sizes.



# ACCESSORIES AND TOOLS

## HSEBS01 – EXTERNAL BENDING SPRING

Professional Bending Springs to assist in the bending of Pert-Al-Pert pipes. Specifically designed to ensure tight, uninked bends can be formed. Ideal for use with our Pert-Al-Pert pipes.



## HSTTPC60 – TACKER GUN STAPLES

60mm pipe fixing staples used with the Hetta universal aluminium staple gun (HSPCIN01). Supplied in quantities of 300.



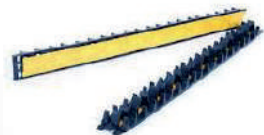
## HSMPS40 – MANUAL PIPE STAPLES

Barbed 40mm manual pipe staples used to manually fix underfloor heating pipe to high-density insulation panels, supplied in quantities of 200.



## HSCR01 - SELF ADHESIVE PIPE RAIL

Self-adhesive plastic clip rail providing easy installation and ready made spacing. Ideal for applications where staples cannot be fixed.



## HSEIN25 - EDGE INSULATION

25m x 150mm x 8mm Edge insulation with Adhesive edge, for use with screed applications eliminating heat loss.



# ACCESSORIES AND TOOLS

## HSPC50 - PIPE CONDUIT

Underfloor Heating (UFH) Black convoluted pipe / flexible corrugated conduit coil 22mm x 25m.



## HSPCT01 – PIPE CUTTING TOOL

Professional grade ratchet pipe cutting tool, cleanly cuts all types of underfloor heating pipe.



## HSMPT01 - MANUAL PRESSING TOOL

Our Manual Pressing Tool supplied with 16,20,25 & 32mm jaw inserts is ideal as a cost-effective introduction to press-fit plumbing and heating. This tool is suitable for pressing fittings, PEX, PERT pipe fittings, stainless steel fittings, copper pipe sleeve connectors.

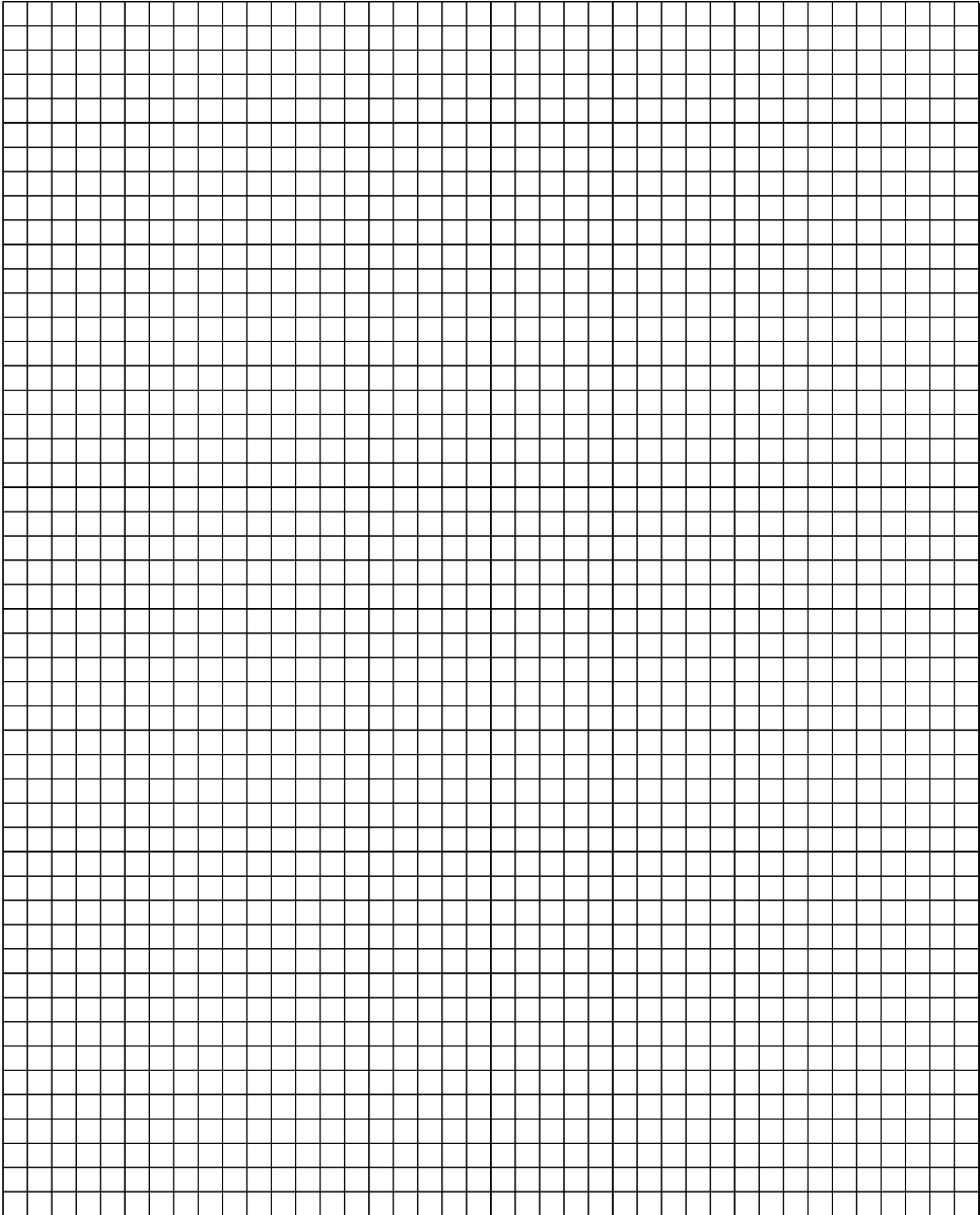


## HSFD170 - FAST DRY CONTACT ADHESIVE 500ML

FD170 polystyrene adhesive is a high solids, extremely tacky spray adhesive free from all chlorinated solvents. The fast-drying adhesive is developed for bonding polystyrene to itself and various substrates



<b>TITLE</b>	
<b>NAME</b>	<b>DATE</b>



# UNDERFLOOR HEATING

## PRODUCT GUIDE 2024

### Quotation Requirements

Heat Source:

Project

Floor Makeup:

Room Size(s):

1  
2  
3  
4  
5

Manifold Location (Distance):

Wiring Option:  
Thermostat

Wifi  
Wired  
Wireless

Notes:

Your Local Hetta Representative:

## ISSUE 19